

A close-up portrait of a woman with blonde hair, looking slightly to the right. She is wearing a beige blazer over a white top. Her jewelry includes large gold hoop earrings, a gold ring with a wavy design on her ring finger, a gold necklace with a teardrop-shaped pendant, and a gold cuff bracelet on her left wrist. Her hand is resting against her chin.

TWENTY COMPASS  
CORE COLLECTION

# ABOUT US

**Model is wearing**

Work of Art and Dolce Vita Rings  
Work of Art Necklace and Vivienne Choker  
Louvres Barcelet



TWENTY COMPASS CREATES  
**LONG-LASTING, EVERYDAY JEWELRY.**



---

OUR STORY

---

We are known for our unique and minimalist designs that can easily elevate any outfit. With a focus on high-quality materials & attention to detail, each piece is designed to be timeless in quality and style.

We bring a new perspective to the jewelry industry by focusing on sustainability, using recycled materials and ethical production methods to create timeless and durable products that you will enjoy for seasons to come.

TC

# MATERIALS

## STAINLESS STEEL

Stainless Steel is exceptionally durable and resistant to tarnishing, scratches, and dents, making it an excellent choice for creating long-lasting everyday pieces. Additionally, stainless steel is hypoallergenic, making it safe for those with sensitive skin.

### ● STAINLESS STEEL

We love that it's hypoallergenic, waterproof and extremely durable.

### ● 18k GOLD PLATED STAINLESS STEEL

Premium 18k Gold plating that lasts significantly longer and never changes colour. We use PVD (Physical Vapor Deposition) plating. It is a process of depositing a layer of gold coating on stainless steel jewellery using a vacuum chamber, resulting in a durable and long-lasting finish. The result is very impressive, the durability of our plating lasts way longer than vermeil, that's why we made the switch to mostly stainless steel. It is extremely rare that we experiment a return due to a plating issue, that's why we love this material so much.

### ● 14k GOLD PLATED STAINLESS STEEL

Premium 14k Gold plating that lasts significantly longer and never changes colour. Our 14k Gold Plated pieces have a lighter golden hue.

## STERLING SILVER

Sterling Silver, also known as 925 Silver, is a precious metal that stands the test of time with proper care.

### ● STERLING SILVER

Our sterling silver pieces are waterproof and plated with Rhodium to protect the silver from outside elements that might accelerate its oxidation. It also gives the jewelry that extra shiny finish we love!

### ● VERMEIL

Our Vermeil pieces are made of Sterling Silver covered by a thick 18 karats Gold layer. With good care, your Vermeil jewelry will stay beautiful and shiny for many years!

# WARRANTY

We are proud to offer a 1 year warranty for all our pieces. By carefully selecting high quality, lasting material, we strive to achieve the highest quality standards. With that in mind, we experience very few returns of defective products from customers. Our pieces are truly made to last!



**Model is wearing**  
Dolce Necklace  
Dani Hoops

TC

# Déesse



**DÉESSE** 27.5  
Stainless Steel Adjustable



**DÉESSE** 27.5  
Stainless Steel Adjustable



**DUNE** 27.5  
Stainless Steel 14" to 16"



**BLISS** 27.5  
Stainless Steel 28mm



**ORIGIN** 27.5  
Stainless Steel 18 mm



**ATHENA** 35  
Gold/Silver Plated 25 x 30 mm



**MYKONOS** 17.5  
Stainless Steel 14" to 16"



Anklet



**MYKONOS** 15  
Stainless Steel 8.5" to 10.5"



**HERA** 26  
Stainless Steel 6-7-8



*Launching in May.*

# Lagoon



**SOLEIL** 41  
Citrine 14"



**LAGOON** 39  
Freshwater Pearls 16" to 18"



Anklet



**LAGOON** 32.5  
Freshwater Pearls 8.5" to 9.5"



**BALI** 27.5  
Stainless Steel Adjustable



**SOLEIL EARRINGS** 26  
Stainless Steel 13 mm



Bracelet



**LAGOON** 26  
Freshwater Pearls 6" to 7"



**BALI** 27.5  
Stainless Steel Adjustable



**BALI EARRINGS** 35  
Stainless Steel 58 mm



Bracelet



**SUBLIME** 12.5  
Stainless Steel 6" to 7"



*Launching in June.*

# NEW ARRIVALS



---

**MON AMOUR**

**34**

Sterling Silver

6 x 15mm





A woman with long, straight black hair is shown from the chest up, looking down and to her right. She is wearing a black, thin-strapped top with lace detailing. Around her neck is a black cord necklace with a white, irregularly shaped pendant. Her hands are clasped in front of her, and she is wearing several silver rings. The background is a plain, light-colored wall.

*C'est la vie*



---

**MEMORIES**

Stainless Steel



27.5

25 mm



---

**C'EST LA VIE**

Stainless Steel



27.5

25 mm



---

**ANTIBES**

Stainless Steel



25

8 x 20 mm



---

**KARMA**

Stainless Steel



27.5

6-7-8



---

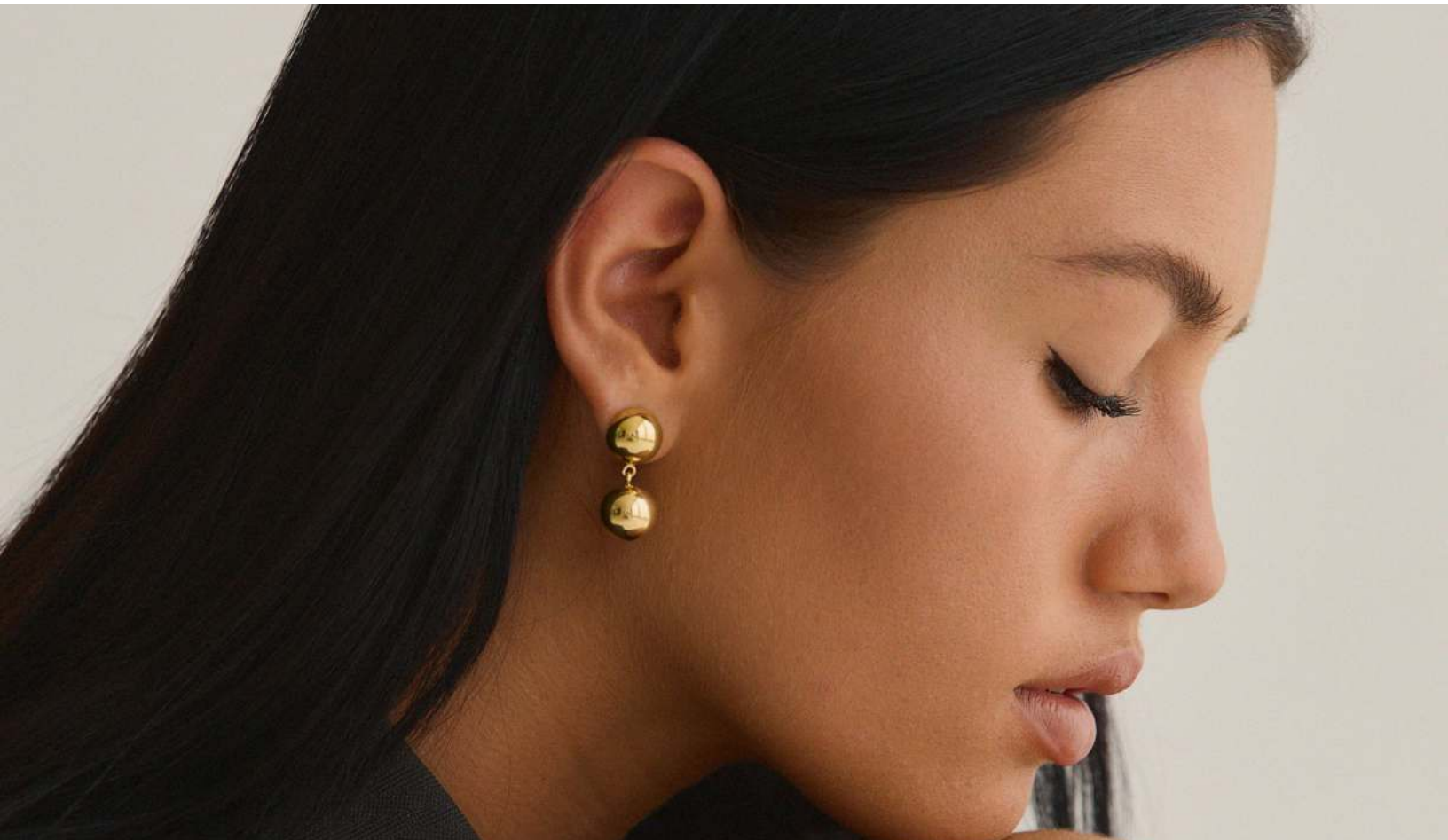
**AURA**

Stainless Steel



15

13.5" to 16.5"





---

**PASSION** 27.5  
Stainless Steel Adjustable



---

**PASSION** 27.5  
Stainless Steel Adjustable



# RINGS



**CURVES SET** 29

Stainless Steel 5-6-7-8



**DOUBLE DÔME** 27.5

Stainless Steel 5-6-7-8-9



**SOUVENIRS** 20

Stainless Steel 5-6-7-8



**BRAIDED** 19

Stainless Steel 5-6-7-8-9



**ÉCLAT** 26

Stainless Steel 5-6-7-8-9



**BAND** 27.5

Stainless Steel 5-6-7-8-9-10



**WORK OF ART** 27.5

Stainless Steel 5-6-7-8-9



**DOLCE VITA** 29

Stainless Steel 5-6-7-8





---

**BASIC** 19  
Stainless Steel 5-6-7-8-9  





---

**MARILOU** 25  
Stainless Steel 5-6-7-8-9  





---

**PRECIOUS** 22.5  
Stainless Steel 5-6-7-8-9  




---

**FLORA** 25  
Stainless Steel 5-6-7-8-9-10  




---

**ART** 19  
Stainless Steel 5-6-7-8  




**DÔME** 26  
Sterling Silver 5-6-7-8-9  
●



**CIRCLE** 19  
Sterling Silver 5-6-7-8-9  
●



**BOHO** 19  
Sterling Silver 5-6-7-8-9  
●



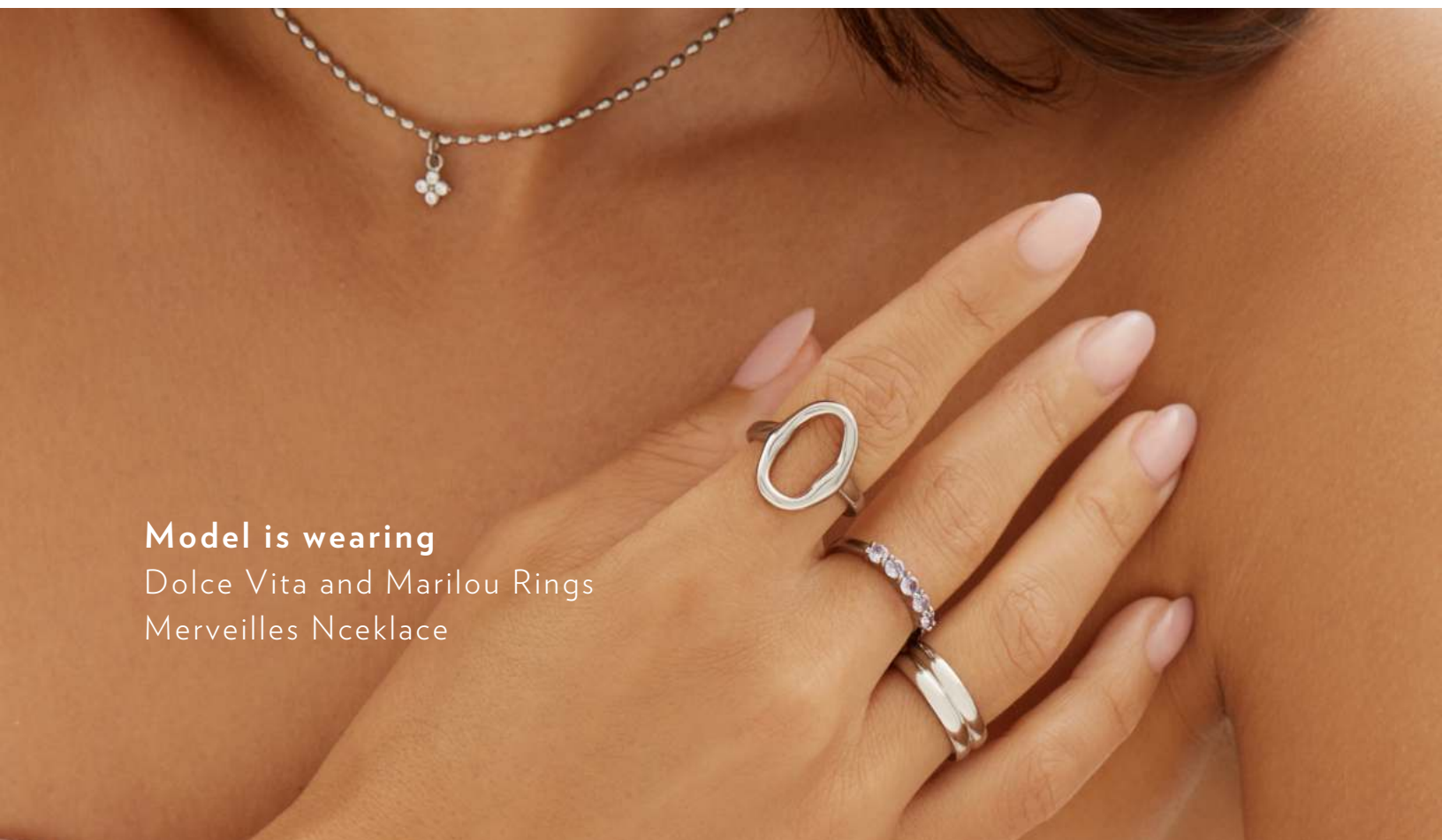
**ALASKA** 22.5  
Sterling Silver 5-6-7-8-9  
● ●



**DAWN** 22.5  
Sterling Silver 5-6-7-8-9  
● ●



**SUNDAZED** 22.5  
Sterling Silver 5-6-7-8-9  
●



**Model is wearing**  
Dolce Vita and Marilou Rings  
Merveilles Nceklace



**Model is wearing**

Curves Ring Set

Nova Necklace

Nova Earrings

# EARRINGS







**AVENUE** 26  
Stainless Steel  
●●



**RADIANCE** 26  
Stainless Steel 40mm  
●●



**NOVA** 29  
Stainless Steel  
●●



**BROOKLYN** 25  
Stainless Steel  
●●



**MONTAIGNE** 20  
Stainless Steel  
●●



**BOHÈME** 24  
Stainless Steel 28mm  
●●



**GRACE** 24  
Stainless Steel 13mm  
●●



**PALOMA** 24  
Stainless Steel 13mm  
●●



**LUDIVINE** 24  
Stainless Steel 13mm  
●●



**MERVEILLES** 22.5  
Stainless Steel 13mm  
●●



**PEARL** 22.5  
Stainless Steel 13mm  
●●



**MUSE** 22.5  
Stainless Steel 13mm  
●●



**WORK OF ART** 22.5  
Stainless Steel 13mm



**MINI BOLD** 27.5  
Sterling Silver 10mm



**ÉCLAT** 26  
Sterling Silver 6mm



**SPLENDOR** 30  
Stainless Steel 45mm



**SOUVENIRS** 20  
Stainless Steel 25mm



**HAILEY** 24  
Stainless Steel 30mm



**DANI** 29  
Stainless Steel 23mm



**BIARRITZ** 22.5  
Stainless Steel 16mm



**ICONIC** 24  
Stainless Steel 20mm



**DOLCE VITA** 30  
Stainless Steel 13 x 30mm



**MARILOU** 22.5  
Stainless Steel 15mm



**LAURE** 19  
Sterling Silver 11 x 15mm





**ALASKA**

Sterling Silver

**22.5**

10mm



**DAWN**

Sterling Silver

**22.5**

10mm



**DIVINE**

Sterling silver

**30**

14 x 20mm



**CROISSANT**

Sterling Silver

**30**

25mm



**CHAIN STUDS**

Sterling Silver

**20**



**25 MM**

Sterling Silver

**19**

25mm



**15 MM**

Sterling Silver

**16**

15mm





**Model is wearing**  
Montaigne Earrings

# EAR CUFFS



**VIENNA** 15

Sterling silver



**SPARKLE** 15

Sterling Silver

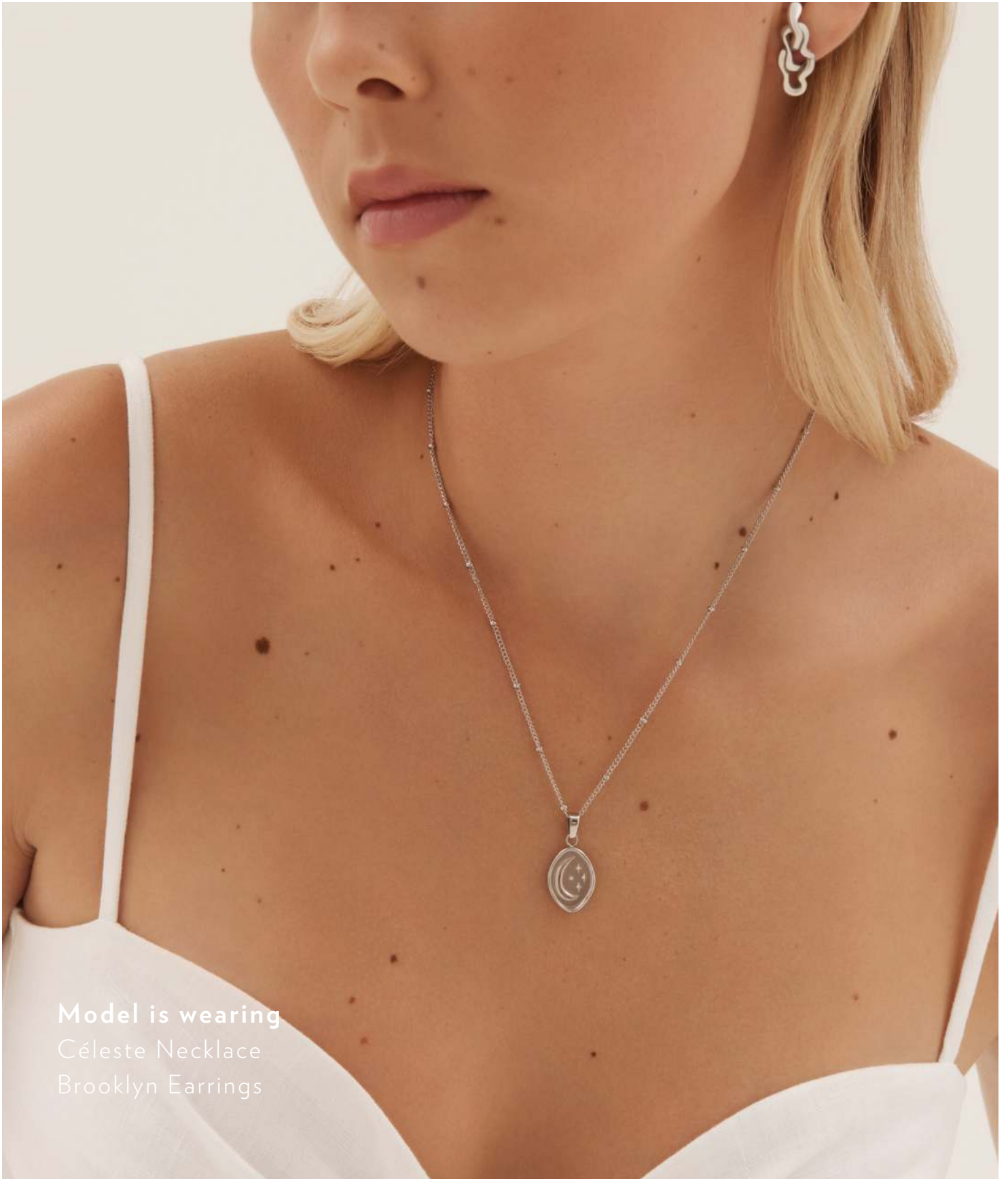


**BASIC** 11

Sterling Silver



# NECKLACES



**Model is wearing**  
Céleste Necklace  
Brooklyn Earrings



**NOVA** 24  
Stainless Steel 16" to 18"



**CÉLESTE** 26  
Stainless Steel 16" to 18"



**DAYDREAM** 24  
Stainless Steel 18" to 20"



**PALOMA** 24  
Stainless Steel 16" to 18"



**VALENCIA** 22.5  
Stainless Steel 17" to 19"



**BUTTERFLY** 22.5  
Stainless Steel 17" to 19"



**SEASIDE** 24  
Stainless Steel 20" to 22"



**MUSE** 22.5  
Stainless Steel 16" to 18"



**GAIA** 25  
Stainless Steel 16"



**FRESHWATER** 20  
Stainless Steel 22"



**MERVEILLES** 20  
Stainless Steel 13" to 16"



**BERAWA** 20  
Stainless Steel 15. to 17"



**BILLIE** 29  
Stainless Steel 19" to 21"  
● ●



**DAINTY** 19  
Stainless Steel 15" to 17"  
●



**WORK OF ART** 26  
Stainless Steel 17" to 19"  
● ●



**MIRAGE** 24  
Stainless Steel 18" to 20"  
● ●



**ISLA** 15  
Stainless Steel 17" to 19"  
●



**PAPERCLIP** 19  
Stainless Steel 16" to 18"  
● ●



**VIVIENNE** 15  
Stainless Steel 15" to 17"  
● ●



**LANAI** 16  
Stainless Steel 15" to 17"  
● ●



**SUBLIME** 15  
Stainless Steel 16" to 18"  
● ●



**KIRA** 16  
Stainless Steel 16" to 18"  
● ●



**ROMANCE** 19  
Stainless Steel 17" to 19"  
● ●



**THIN ROMANCE** 17.5  
Stainless Steel 17" to 19"  
● ●





**POÉSIE** 39

Freshwater Pearls 15" to 17"



**AZUR** 39

Freshwater Pearls 15" to 17"



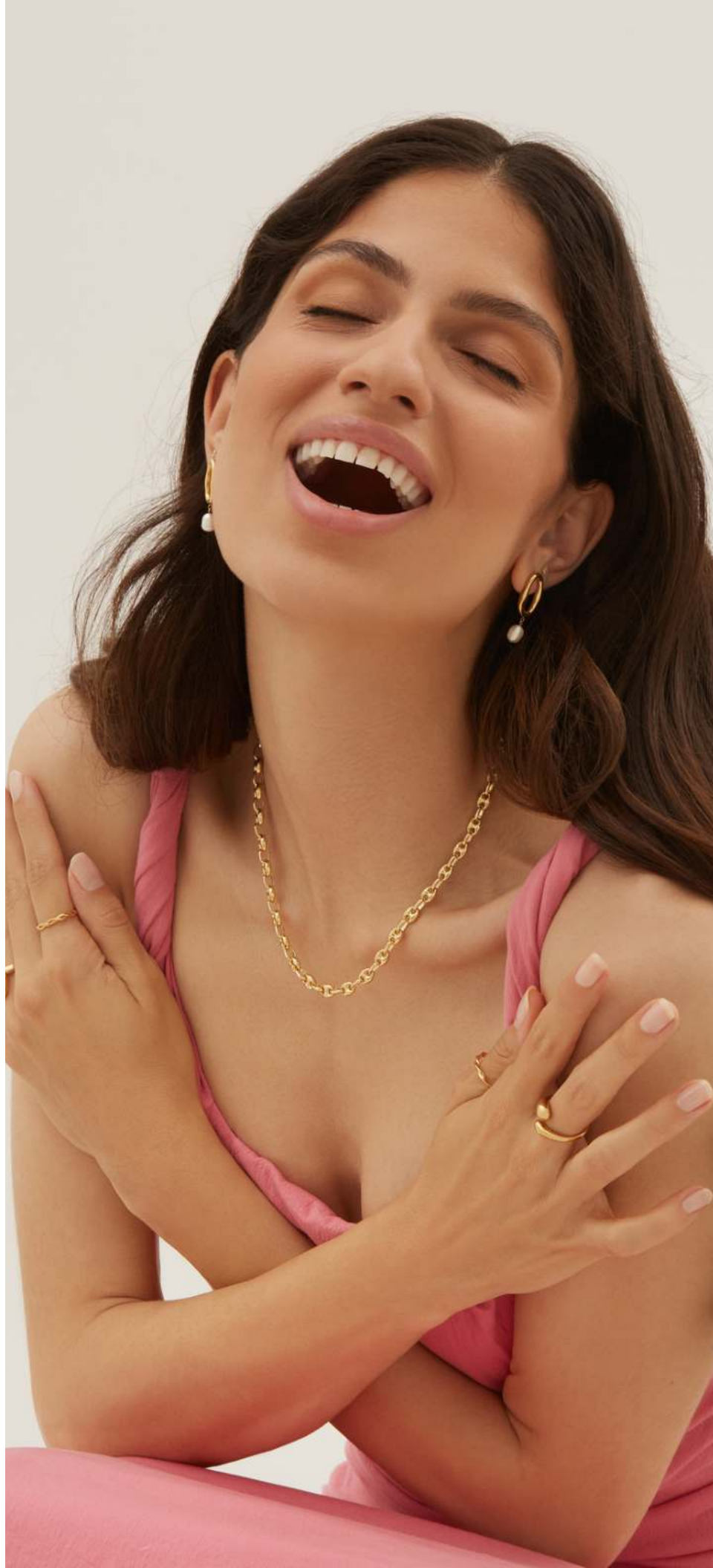
**SOULMATE** 39

Sterling Silver 15" to 17"



**MARBELLA** 87.5

Sterling Silver 18" to 20"





**DOLCE**

**27.5**

Stainless Steel

Adjustable



**DOLCE**

**27.5**

Stainless Steel

Adjustable



**DREAMY**

**22.5**

Stainless Steel

Adjustable



**DREAMY**

**22.5**

Stainless Steel

Adjustable



Model is wearing  
Merveilles Necklace  
Grace Hoops



# BRACELETS





**CURVES** 30  
Stainless Steel XS/S - M/L



**ROMANCE** 15  
Stainless Steel 6" to 7"



**HOPELESS** 14  
Stainless Steel 6" to 7"



**KIRA** 14  
Stainless Steel 6" to 7"



**PAPERCLIP** 15  
Stainless Steel 6" to 7"



**JUDE** 15  
Stainless Steel 6" to 7"



**LOUVRES** 60  
Sterling Silver 6.5" to 7.5"



**ADORE** 37.5  
Sterling Silver 6.5" to 7.5"



**AZUR** 26  
Freshwater Pearls 6.5" to 7"





**Model is wearing**

Nova Earrings

Curves Bracelet


Sublime Necklace



# ANKLETS




---

**RIVIERA** 15  
Stainless Steel 8.5" to 10.5"  




---

**JULY** 17.5  
Stainless Steel 8.5" to 10.5."  




---

**BONDI** 17.5  
Stainless Steel 8.5" to 10.5"  


# BODY CHAINS



**HAVANA** 19

Freshwater Pearls 1-2-3



**MALIBU** 19

Stainless Steel 1-2-3



**EMBRACE** 19

Stainless Steel 1-2-3



**BRISA** 19

Stainless Steel 1-2-3



## SIZE CHART BODY CHAINS

**Size 1: 25" + adjustable chain 4"**  
refer to jeans sizes 24-25-26-27

**Size 2: 29" + adjustable chain 4"**  
refer to jeans sizes 27-28-29-30

**Size 3: 33" + adjustable chain 4"**  
refer to jeans sizes 30-31-32-33



**Model is wearing**

Dolce Vita and Marilou Rings

Merveilles Necklace

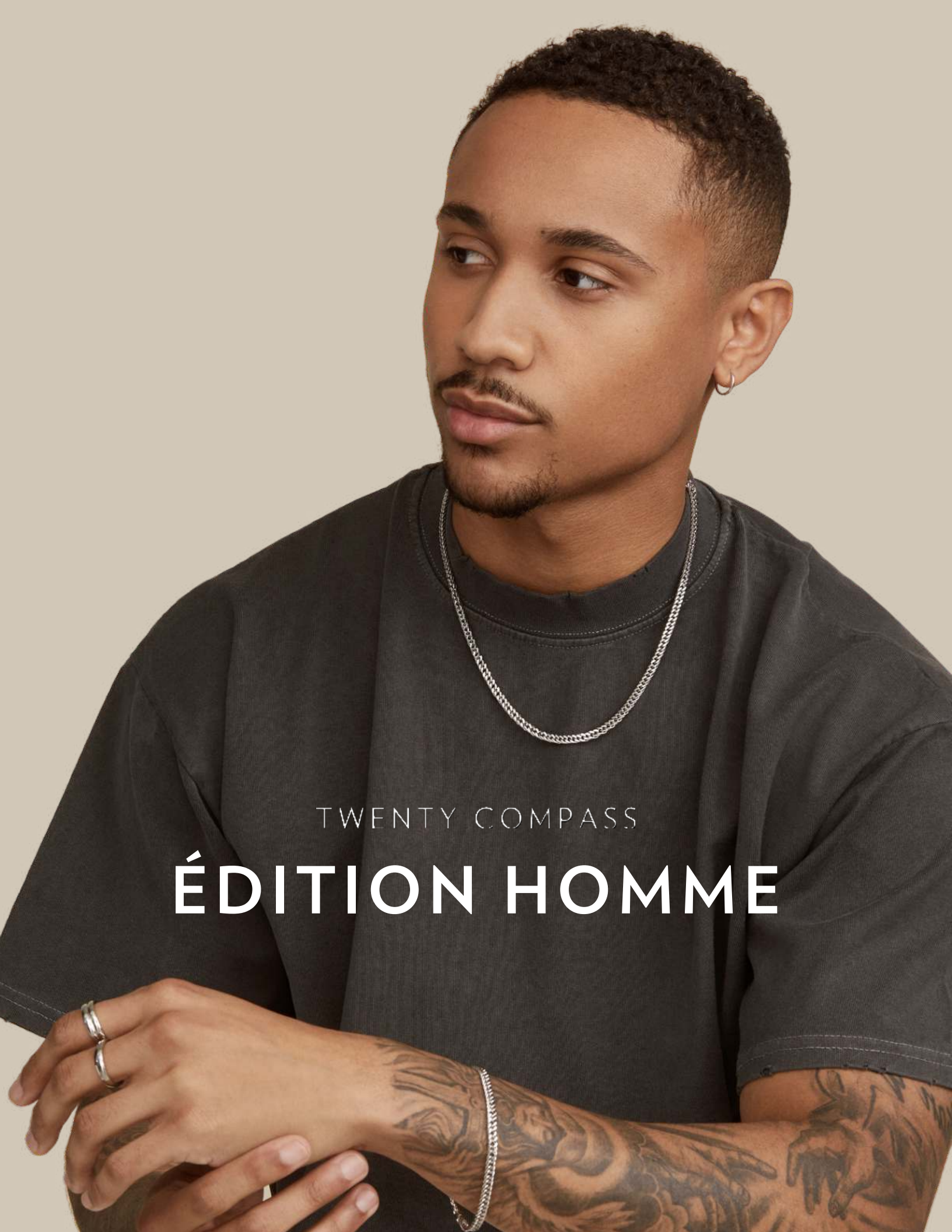
Grace Hoops

Sparkle Ear Cuff



TWENTY COMPASS  
CORE COLLECTION  
2024





TWENTY COMPASS

# ÉDITION HOMME

# RINGS



**MAYFAIR**

**25**

Stainless

7-8-9-10-11-12



**LONDON**

**27.5**

Stainless

7-8-9-10-11-12



**BASIC**

**20**

Stainless Steel

7-8-9-10-11



**BRAIDED**

**20**

Stainless Steel

7-8-9



**LOU**

**25**

Stainless

7-8-9-10-11-12



**FLORA**

**26**

Stainless

7-8-9-10-11-12



# NECKLACES & BRACELETS





**JASPER** 22.5  
Stainless Steel 23" to 25"



**MIAMI** 20  
Stainless Steel 19" to 22"



**YORK** 20  
Stainless Steel 23" to 25"



**SICILIAN** 16  
Stainless Steel 19" to 22"



**CUBAN** 16  
Stainless Steel 19" to 22"



**ROPE 3MM** 17.5  
Stainless Steel 17" to 19"



**ROPE 2MM** 16  
Stainless Steel 17"



**MIAMI** 16  
Stainless Steel 7" to 8"



**SICILIAN** 16  
Stainless Steel 7" to 8"



**CUBAN** 15  
Stainless Steel 7" to 8"





# TRAVEL POUCH

\$15



TEDDY



ONYX



CLOUD

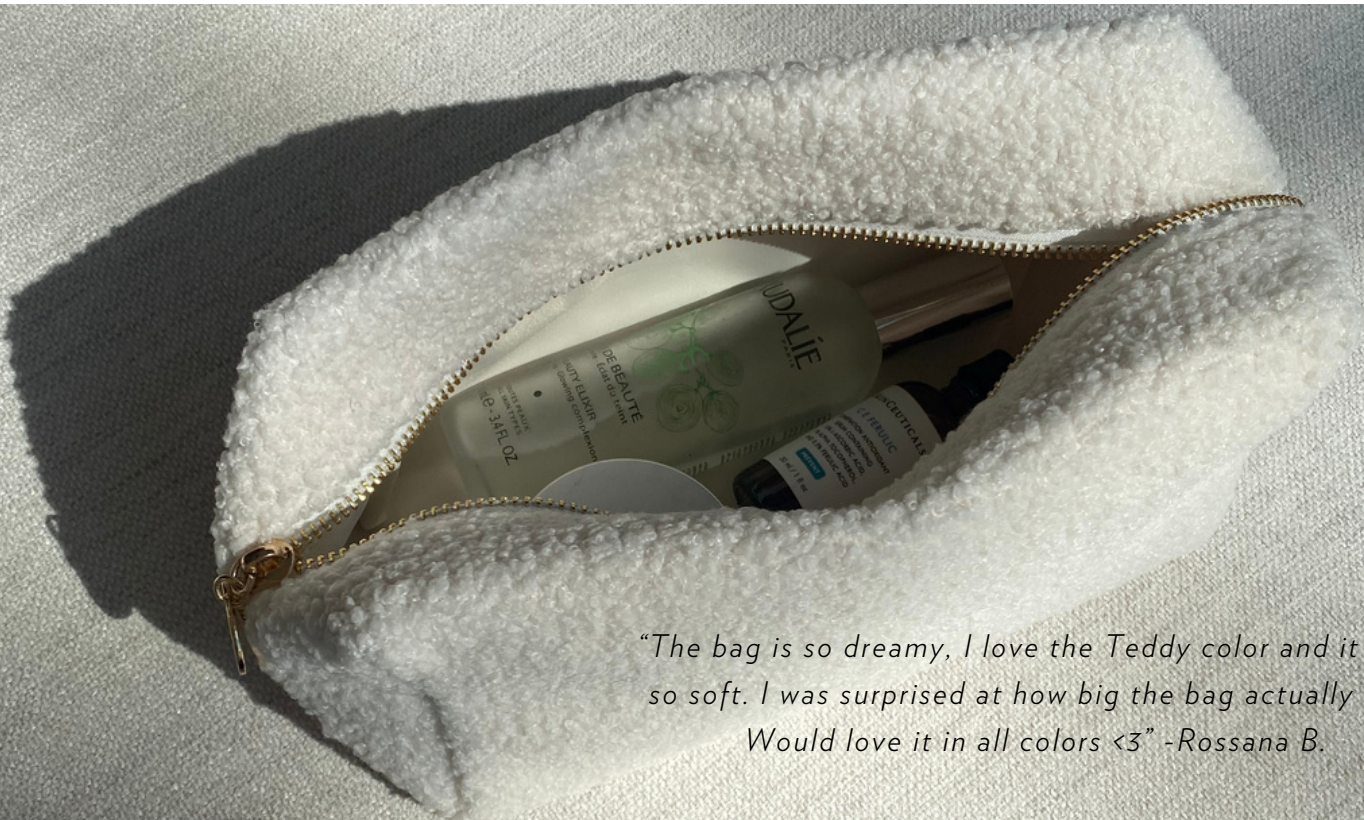


PINK PETALS



CERISE

Dimensions : 11 x 8 x 5 inches  
Exterior : Cotton  
Interior lining : Polyester  
(Waterproof)



*"The bag is so dreamy, I love the Teddy color and it feels so soft. I was surprised at how big the bag actually was. Would love it in all colors <3" -Rossana B.*



