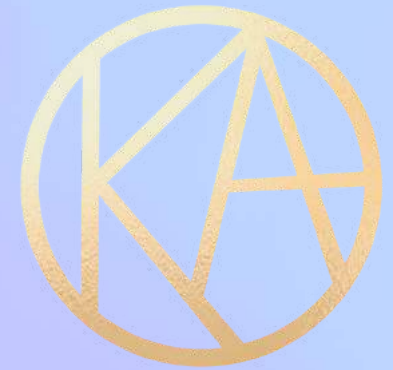


A woman with long dark hair, wearing a vibrant magenta dress, is the central figure. She holds a large, multi-layered pink rose to her right eye, partially obscuring it. Her left hand is raised near her forehead, adorned with a ring. She wears several pieces of jewelry: a necklace with a butterfly pendant, a necklace with a pink circular pendant, and a bracelet on her left wrist. The background is a soft gradient of purple and blue. The word 'KAMARIA' is written in large, white, sans-serif capital letters across the middle of the image.

KAMARIA

/ KA • MA • RIA /



[Swahili] moonlight

[Greek] pride in one's dignity

Be the light that changes the tides

10% of every purchase supports student survivors of campus sexual assault achieve their education with rent, medical, and tuition assistance through our own nonprofit RestoreDignity.com

Words of Gratitude from Survivors

**I AM SO HIGHLY BLESSED AND GRATEFUL TO
HAVE RECEIVED THIS AWARD. I HAVE TEARS OF
JOY FLOWING IN ABUNDANCE.
THANK YOU SO, SO MUCH.**

Your assistance has filled
me with a sense of support
and hope. Teresita

I don't think I have
processed this and I am
quite shocked that people I
have never met would have
my back in this way.

**I WAS A DEAN'S LIST STUDENT BEFORE
MY PTSD SYMPTOMS HIT ME LIKE A
FREIGHT TRAIN SO I AM STARTING TO
GET SOME OF THAT MOJO BACK.**

Thank you for reminding me that I
deserve good things. This means so
much to me.

**I AM SO GRATEFUL TO RESTORE DIGNITY FOR
ALLOWING ME TO FOCUS ON MY EDUCATION
BY GIVING ME A SAFER HOME ENVIRONMENT.
SIMONE**

Restore Dignity has helped
ease the burden of seeking
justice and protecting
other students. Thank you
so much for supporting me
and for helping me feel
more confident.
-- Grateful.

KAMARIA is an award-winning + women-owned New York City based jewelry brand whose mission is to support student survivors of power-inequality trauma and campus sexual assault. Ten percent of proceeds from KAMARIA go directly toward our non-profit, Restore Dignity, which helps pay for tuition, medical bills, and rent assistance for student survivors trying to achieve a higher education.

As survivors and cousins, we know firsthand the power of being in a supportive community. KAMARIA means "moonlight" in Swahili and "pride in one's dignity" in Greek, and has been featured in Condé Nast Traveller and recognized by the Accessories Council. We specialize in a unique line of colorful lab-created and natural gemstone jewelry in 925 sterling silver and 14K gold. Our signature piece, the butterfly necklace, is a symbol of hope, rebirth, and transformation.

Our goal is to empower women and men by wearing our jewelry. Even in the dark of night, the moon provides a beacon of light and hope. Like the moon, even in the darkest times, you too can reflect light.

Love,

Ellie + Kristen

CO-FOUNDERS & COUSINS





All of our jewelry is hypoallergenic made with **925 sterling silver** with 14k gold plating and an organic e-coat to protect from tarnishing.

The clasp has an adjustable slider for layering.

All pieces are **18"**

Our wholesale to retail margins average about **2.5x**

Opal Butterfly

Best Seller!

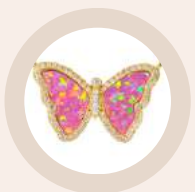


N-OPL-007

\$40 W | \$98 R



FU-G



P-G



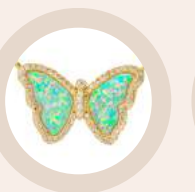
OR-G



TA-G



W-G



LG-G



BG-G



IN-G



BK-G



LV-G

Opal Butterfly - Silver!



N-OPL-007
\$40 W | \$98 R



W-S



LG-S



LV-S



BK-S

Opal Butterfly with Stripes



N-OPL-007
\$40 W | \$98 R

GOLD



PS-G



COS-G



WS-G



LGS-G



BGS-G



INS-G



BKS-G

SILVER



PS-S



COS-S



WS-S



LGS-S



BGS-S



BKS-S

Stone Butterflies



Amazonite

N-GEM-046

\$46 W | \$115 R



Turquoise

N-LCG-008

\$40 W | \$98 R



Copper Turquoise

N-GEM-051

\$46 W | \$115 R



Black Onyx

N-GEM-044

\$46 W | \$115 R



Synthetic Malachite

N-LCG-019

\$46 W | \$115 R



Carved Turquoise

N-LCG-020

\$46 W | \$115 R



Lapis Lazuli

N-GEM-045

\$46 W | \$115 R



Carved Pronged Butterfly

New!



Copper Turquoise

N-GEM-052-G

\$48 W | \$120 R

Turquoise

N-GEM-053-G

\$48 W | \$120 R

Opal

N-OPL-039-W-G

\$48 W | \$120 R

N-OPL-039-BK-G

\$48 W | \$120 R

N-GEM-039-LV-G

\$48 W | \$120 R

N-GEM-039-BG-G

\$48 W | \$120 R

Mini Opal Butterfly



N-OPL-017
\$36 W | \$90 R



Mini Stone Butterfly



Turquoise

N-LCG-010

\$36 W | \$90 R

Carved Pearl

N-LCG-032-G

\$40 W | \$98 R

Black Onyx

N-LCG-014

\$40 W | \$98 R



Pink Quartz

N-LCG-031-MG

\$36 W | \$90 R



Aqua Quartz

N-LCG-013

\$36 W | \$90 R



Light Teal

N-LCG-031-LB

\$36 W | \$90 R



Lavender Quartz

N-LCG-031-LV

\$36 W | \$90 R



Opal Bird



Dove

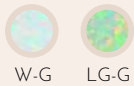
N-OPL-036

\$46 W | \$115 R

Dove

N-OPL-037

\$58 W | \$145 R



TAOR-G



BGIN-G



LVFU-G



FU-G



W-G



LG-G



BG-G



IN-G



LV-G



Mini Butterfly Charm Necklace



Opal
N-OPL-038
\$36 W | \$90 R

Gold-Plated w/ Crystals
N-CRS-031-SC
\$20 W | \$48 R



FU-G



TA-G



LG-G



BG-G



IN-G



LV-G



LP-G



W-G



BK-G



Evil Eye
N-MET-019-W/TQ-G
\$30 W | \$75 R



Cross
N-CRS-032-G
\$28 W | \$70 R



Opal Evil Eye with Rays
N-OPL-040-BG-G
\$40 W | \$100 R



Layering Chain

18" with slider ball

Paperclip

N-MET-009-18-G

\$32 W | \$80 R

Bar

N-MET-017-G

\$40 W | \$98 R

Mirror

N-MET-018

\$24 W | \$60 R

Sparkle Bead

N-MET-016-G

\$36 W | \$90 R



Evil Eye
N-OPL-028-LG-G
\$44 W | \$110 R



Evil Eye
N-OPL-028-IN-G
\$44 W | \$110 R



Compass
N-OPL-027-G
\$44 W | \$110 R



Celestial Dogtag
N-OPL-035-G
\$36 W | \$90 R



Queen Bee
N-MET-020-SC
\$62 W | \$155 R

Medallion Dreaming



LG-G

W-G

W-G

BE-G

Octagon Butterfly

N-OPL-032

\$60 W | \$150 R

Octagon Moon

N-OPL-034

\$60 W | \$150 R





DREAM
N-OPL-031-G
\$60 W | \$150 R



HOPE
N-OPL-029-G
\$64 W | \$160 R



WISH
N-OPL-030-G
\$60 W | \$150 R

Opal Medallion



Sparkle Beads!

N-MET-015 \$36 W | \$90 R



FU

OR

TA

CH

LG

GR

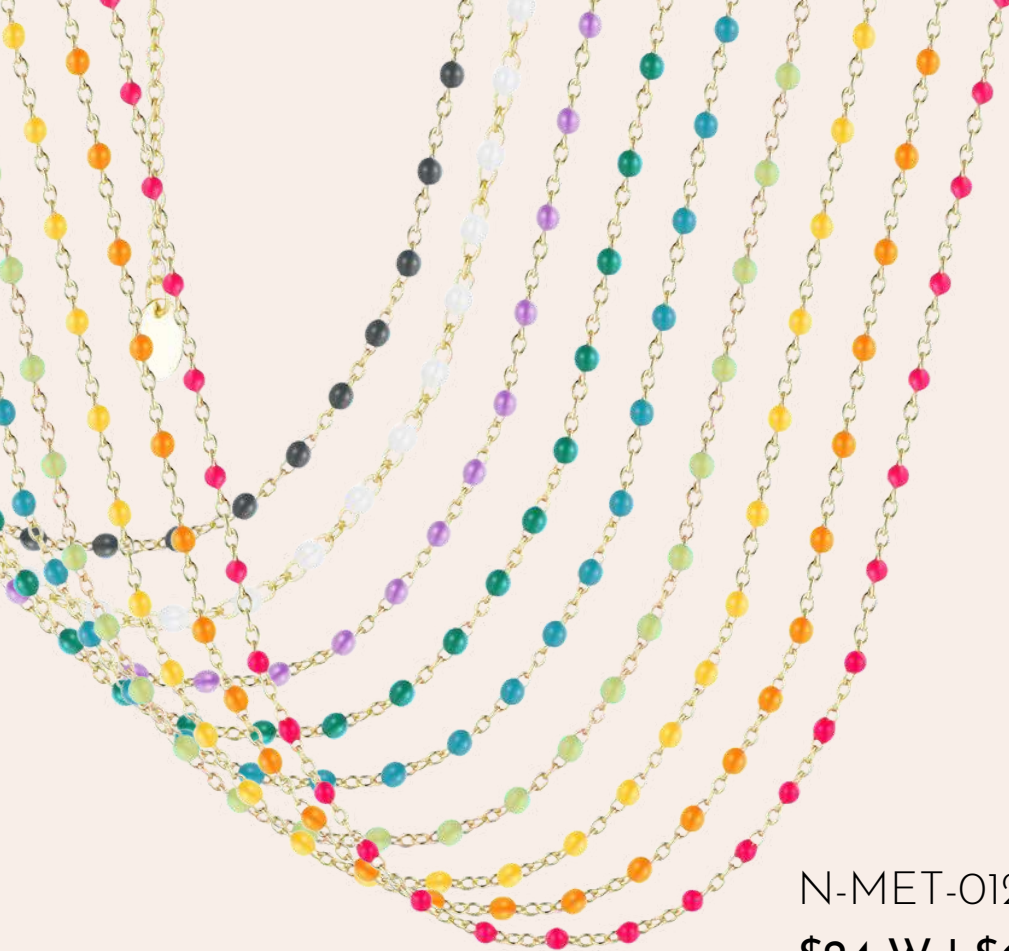
DG

TQ

LV

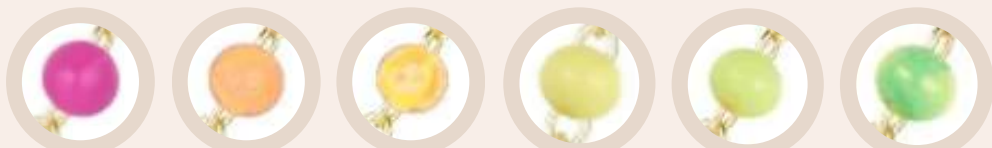
W

BK



N-MET-012
\$24 W | \$60 R

Enamel Chain



FU-G OR-G TA-G CH-G LG-G GR-G



TQ-G DG-G LV-G W-G BK-G

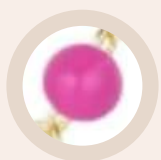




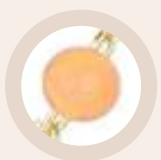
Large Enamel Chain

N-MET-014

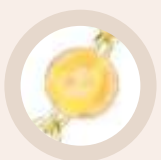
\$28 W | \$70 R



FU



OR



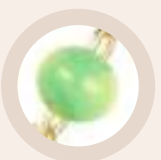
TA



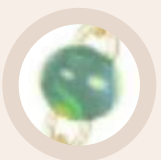
CH



LG



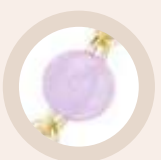
GR



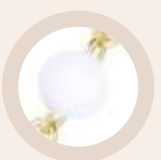
DG



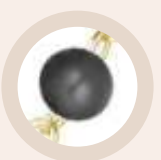
TQ



LV



W



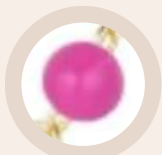
BK

Enamel Bracelet

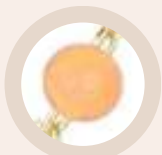


B-MET-009

\$20 W | \$48 R



FU



OR



TA



CH



GR



DG



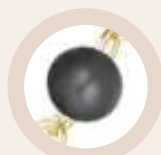
TQ



LV



W



BK

Enamel Heart



Pink + Opal
N-OPL-023-G
\$44 W | \$110 R

Teal + Opal
N-OPL-024-G
\$44 W | \$110 R

Black + Opal
N-OPL-021-G
\$44 W | \$110 R

Very Peri
N-MET-011-VP-G
\$34 W | \$85 R

Black + Pearl
N-OPL-022-G
\$44 W | \$110 R



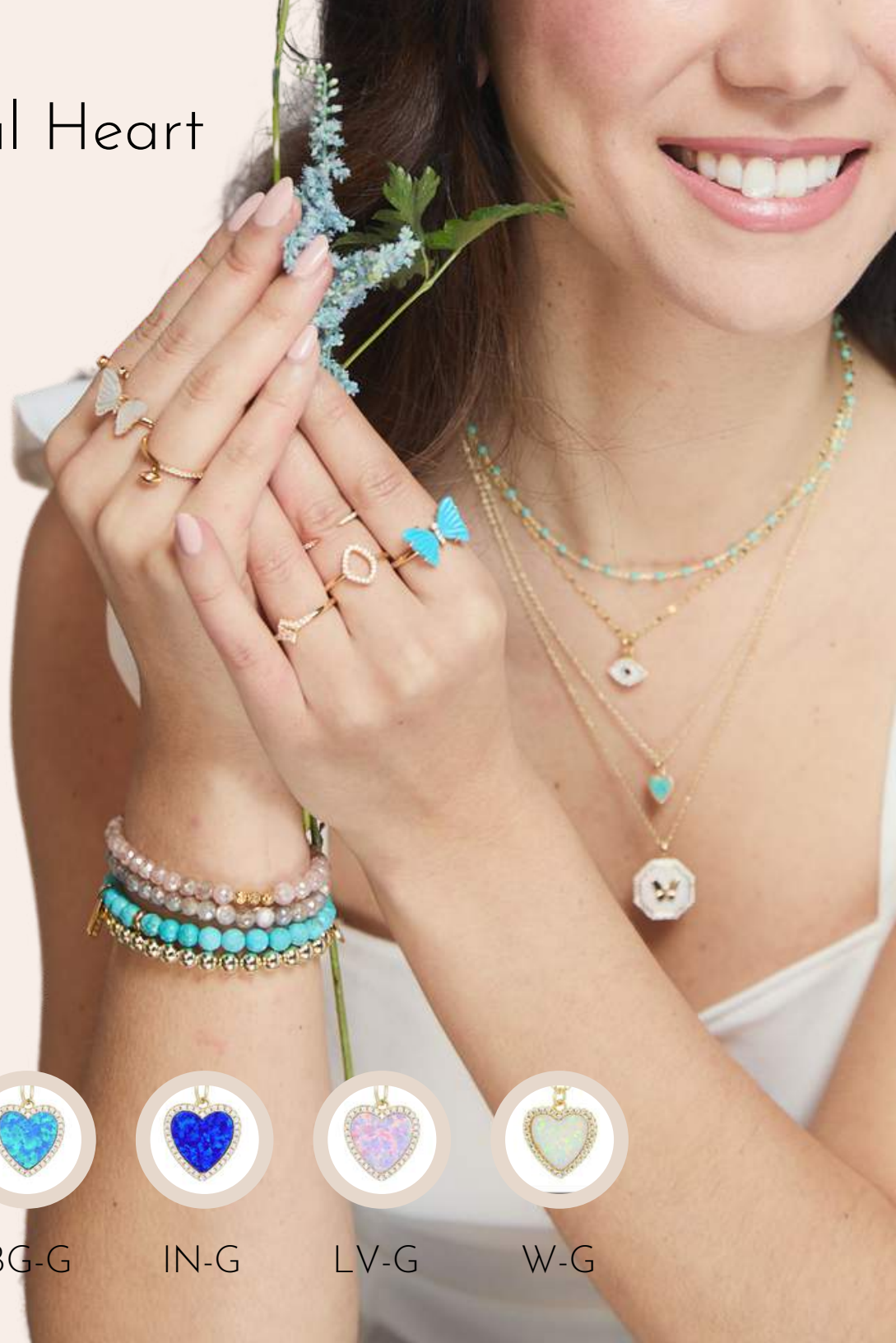
Opal Heart



Mini Opal Heart
N-OPL-019
\$28 W | \$70 R



Opal Heart
N-OPL-020
\$32 W | \$80 R



P-G



LG-G



LB-G



BG-G



IN-G



LV-G



W-G

Stone Heart



Turquoise

N-LCG-022-G

\$28 W | \$70 R

Malachite

N-LCG-023-G

\$28 W | \$70 R

Lapis Lazuli

N-LCG-024-G

\$28 W | \$70 R

Black Onyx

N-LCG-025-G

\$28 W | \$70 R

N-LCG-026-G

\$32 W | \$80 R

N-LCG-027-G

\$32 W | \$80 R

N-LCG-028-G

\$32 W | \$80 R

N-LCG-029-G

\$32 W | \$80 R

Drops of Spring

Best Seller!

N-OPL-001

\$38 W | \$95 R



FU-G



OR-G



TA-G



W-S



LG-G



TQ-G



BG-G



IN-G



LV-G



BK-G



W-S



LG-S



TQ-S



LV-S



BK-S

Dew Drops

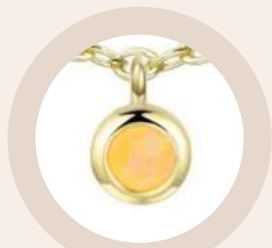
N-OPL-025

\$32 W | \$80 R

Reversible!



FU-G



TA-G



BG-G



BK-G



W-G



OR-G



LG-G



IN-G



LV-G



N-LCG-030-G



LV-G

BK-G

BG-G

LG-G

TA-G

W-G

MCP-G

Ombre!

Drilled Opal Necklace

N-OPL-026

\$50 W | \$ 125 R





N-CRS-014
\$24 W | \$60 R

N-CRS-016
\$32 W | \$80 R

N-CRS-019
\$36 W | \$90 R



N-CRS-030
\$24 W | \$60 R

N-CRS-029
\$26 W | \$65 R

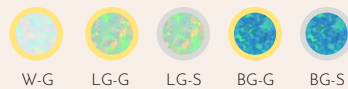
Layering Necklaces



S G R



Opal Pendants



Opal Star

N-OPL-012

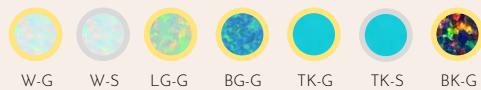
\$30 W | \$75 R



Opal Moon

N-OPL-014

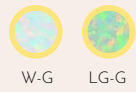
\$30 W | \$75 R



Opal Hamsa

N-OPL-013

\$30 W | \$75 R



W-G

LG-G

Teardrop

N-OPL-028-LG-G

\$44 W | \$65 R



Johari

N-OPL-016-LG-G

\$40 W | \$98 R



W-G

W-S

LG-G

LG-S

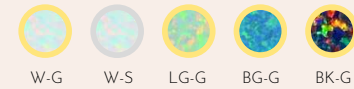
Best Friend

N-OPL-004

\$26 W | \$65 R

Drop it like it's hot...

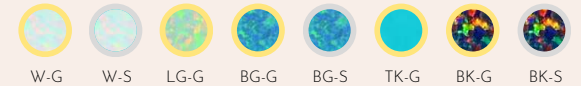
Opal Shapes



Original Opal

N-OPL-006

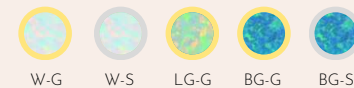
\$38 W | \$95 R



Reflection

N-OPL-003

\$28 W | \$70 R



Beacon

N-OPL-002

\$28 W | \$70 R



Opal Kokoto Necklace

N-OPL-015

\$40 W | \$98 R



FUS-G



WS-G



LGS-G



BGS-G



LVS-G



BKS-G



WS-S



BGS-S



Double Slider Lariats

Our double slider lariats have two slider balls, one near the clasp and the other near the pendant, allowing you to adjust both the style and the overall length of the necklace!

Long Bar
N-CRS-024L-G
\$30 W | \$75 R

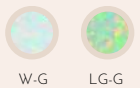
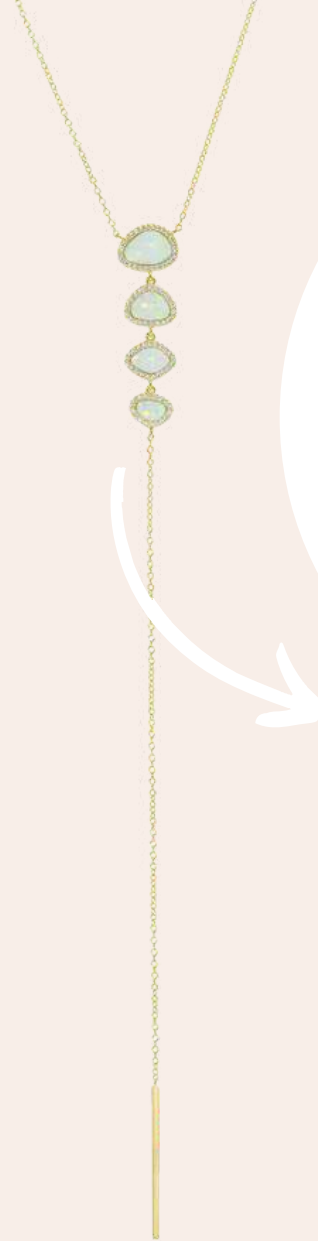
Chrysoprase
N-GEM-025-CR
\$30 W | \$75 R

Labradorite
N-GEM-025-LB
\$30 W | \$75 R

Amethyst
N-GEM-021-PA
\$30 W | \$75 R

Pearl
N-GEM-022-W
\$38 W | \$95 R





Lady Lariat
N-OPL-005
\$26 W | \$65 R

Double Slider
N-OPL-011
\$48 W | \$120 R

Quad Lariat
N-OPL-010
\$72 W | \$180 R

Opal Lariats

Lab-Grown Gemstones



Marina
N-LCG-001
\$40 W | \$98 R



Johari
N-LCG-002
\$40 W | \$98 R



Atiena
N-LCG-003
\$40 W | \$98 R



Kokoto
N-LCG-004
\$40 W | \$98 R



LB



TZ



PB



MG



G



S



Natural Gemstones



Tanzanite

N-GEM-026

\$96 W | \$240 R

● G ● S

Labradorite

N-GEM-003

\$50 W | \$125 R

● G ● S

Moonstone

N-GEM-028

\$50 W | \$125 R

● G ● S



Aura Gemstone Necklaces



Peridot

N-GEM-039T

\$44 W | \$110 R

Moonstone

N-GEM-040

\$44 W | \$110 R

Amethyst

N-GEM-039-PA

\$44 W | \$110 R

Swiss Blue Topaz

N-GEM-039-SBT

\$44 W | \$110 R

Labradorite

N-GEM-039-LB

\$44 W | \$110 R





London Blue Topaz
N-GEM-039-LBT
\$56 W | \$140 R



Aquamarine
N-GEM-039-AQ
\$56 W | \$140 R



Morganite
N-GEM-039-MG
\$84 W | \$210 R



Aura Pink Tourmaline



Light Pink

N-GEM-039T-LP

\$84 W | \$210 R

Pink

N-GEM-039T-PK

\$84 W | \$210 R

Dark Pink

N-GEM-039T-DP

\$84 W | \$210 R

Due to the nature of the stone, pink tourmaline can range from a light pink, to a dark pink, to even a peach color. No two stones are alike.



Aura Green Tourmaline



Aqua

N-GEM-039T-AQ

\$84 W | \$210 R

Light Green

N-GEM-039T-LG

\$84 W | \$210 R

Green

N-GEM-039T-GN

\$84 W | \$210 R

Dark Green

N-GEM-039T-DG

\$84 W | \$210 R

Due to the nature of the stone, green tourmaline can range from a light aqua, to a dark green, to even an olive color. No two stones are alike.





Birthstone Necklace

N-LCG-015

\$22 W | \$55 R

Jan

Feb

Mar

Apr

May

Jun

Jul

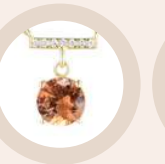
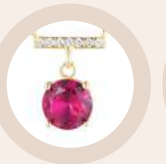
Aug

Sep

Oct

Nov

Dec



GA-G

AM-G

AG-G

W-G

EM-G

PL-G

RU-G

PD-G

SA-G

OP-G

YT-G

BT-G



Mini Restore Dignity

N-MET-007-SC-G

\$28 W | \$65 R



Hamsa

N-CRS-022

\$44 W | \$110 R



Om

N-MET-006-SC-G

\$28 W | \$65 R

Double Bar

N-CRS-020

\$50 W | \$125 R



Evil Eye

N-CRS-023

\$44 W | \$110 R



Disk

N-CRS-021

\$40 W | \$80 R



Restore Dignity

N-MET-008-BC18-G

\$80 W | \$175 R on ball chain

\$45 W | \$100 R on simple chain

Opal Butterfly Studs



E-OPL-010
\$30 W | \$75 R



FU-G



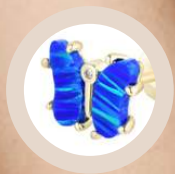
TA-G



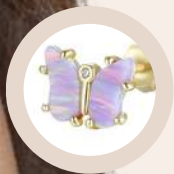
LG-G



BG-G



IN-G



LV-G



LP-G



W-G



BK-G

Nature Studs



Butterfly

E-CRS-020-G/S

\$18 W | \$45 R



Bee

E-OPL-017

\$20 W | \$48 R



Dragonfly

E-CRS-031-G/S

\$16 W | \$38 R

Flower

E-OPL-016

\$16 W | \$38 R



Seed

E-OPL-015

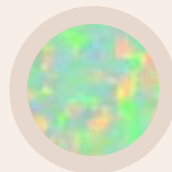
\$16 W | \$38 R



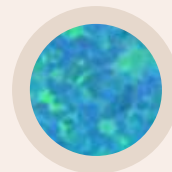
FU-G



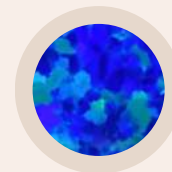
TA-G



LG-G



BG-G



IN-G



LV-G



W-G

Best Seller!

Full Swing

Full Swing

E-OPL-002

\$21 W | \$52 R



FU-G



OR-G



TA-G



W-S



LG-G



BG-G



IN-G



LV-G



BK-G



W-S



LG-S



LB-S

Colorful Pebble Studs



Best Seller!



Opal Pebble

E-OPL-003

\$23 W | \$58 R

Turquoise Pebble

E-OPL-003

\$23 W | \$58 R

Crystal Pebble

E-CRS-008-G

\$23 W | \$58 R



FU-G

OR-G

TA-G

LG-G

BG-G

BG-S

IN-G

LV-G

W-G

W-S

BK-G

Enamel Opal Huggie



FU-G

OR-G

LG-G

BK-G

LV-G

W-G



E-OPL-011
\$30 W | \$75 R

Sold as a pair

Boho Shaker Huggies



E-OPL-008
\$44 W | \$110 R

E-LCG-004-G
\$44 W | \$110 R



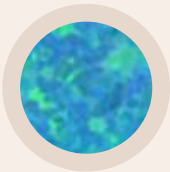
FU-G



TA-G



LG-G



BG-G



TQ-G



LV-G



LP-G



W-G



BK-G

Round Opal Studs



3mm
E-OPL-006
\$16 W | \$38 R



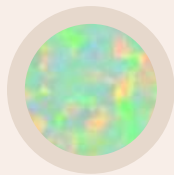
4mm
E-OPL-007
\$18 W | \$45 R



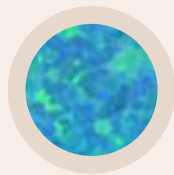
FU-G



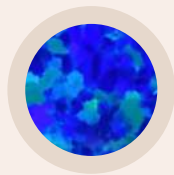
TA-G



LG-G



BG-G



IN-G



LV-G



W-G



BK-G

Colorful Opal Earrings



Marquise
E-OPL-005
\$20 W | \$48 R



Stars Align
E-OPL-009
\$18 W | \$45 R



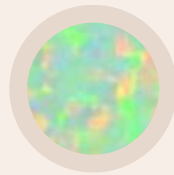
FU-G



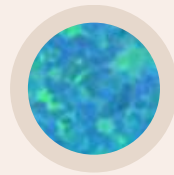
OR-G



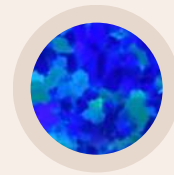
TA-G



LG-G



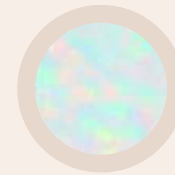
BG-G



IN-G



LV-G



W-G



BK-G

Heart Earrings



E-OPL-001
\$23 W | \$58 R

E-LCG-002-G
\$23 W | \$58 R

E-OPL-013
\$28 W | \$70 R



BK-G



TQ-G



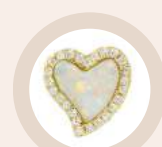
P-G



LG-G



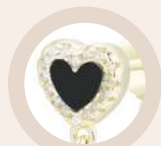
BG-G



W-G



MA-G



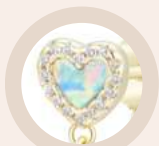
BO-G



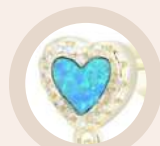
TQ-G



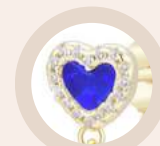
P-G



LG-G



BG-G



IN-G



LV-G

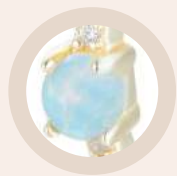


W-G

Opal Huggie



Opal Huggie
E-OPL-014
\$22 W | \$55 R



LG-G



IN-G



LV-G



W-G

Huggies



Arrow

E-CRS-015-TG

\$28 W | \$70 R



Double Huggie

E-CRS-014 ● G ● S ● R

\$28 W | \$70 R



Huggies

E-CRS-005 ● G ● S ● R

\$20 W | \$48 R



Moon

E-CRS-013 ● G ● S

\$28 W | \$70 R



Star

E-CRS-012 ● G ● S

\$28 W | \$70 R



Butterfly

E-CRS-017-G ● G ● S

\$24 W | \$60 R



E-CRS-007-G

\$30 W | \$75 R

● G ● S



E-CRS-001-G

\$80 W | \$180 R

● G ● S

E-CRS-018-G

\$20 W | \$48 R



E-CRS-016-G

\$20 W | \$48 R



E-MET-001-G

\$28 W | \$70 R

● G ● S



E-CRS-006-G

\$24 W | \$60 R

● G ● S

Huggies



Dragonfly
E-CRS-029-G
\$24 W | \$60 R

● G ● S

Cross
E-CRS-030-G
\$26 W | \$65 R

● G ● S

Chain
E-CRS-032-G
\$26 W | \$65 R



Paperclip



B-MET-011

\$20 W | \$48 R

B-MET-012

\$30 W | \$75 R

Sparkle



B-MET-010

\$16 W | \$40 R

B-MET-013

\$24 W | \$60 R

B-MET-014

\$28 W | \$70 R

Bracelets

Gold-Plated Beaded Bracelets



4mm beads
B-MET-007
\$24 W | \$60 R



6mm beads
B-MET-008
\$48 W | \$120 R



4 + 6mm beads
B-STA-003
\$68 W | \$170 R

Bracelets

4mm Stacking Bracelets



Lavender Jade
B-GEM-012-LV
\$14 W | \$35 R



B-STA-001-LV
\$36 W | \$90 R



Amazonite
B-GEM-012-AM
\$14 W | \$35 R



B-STA-001-AM
\$36 W | \$90 R



Restore Dignity Beaded Bracelets



Turquoise
B-GEM-011-TO
\$16 W | \$40 R

Inscribed in Hindi:
"Your power, our dignity"



Howlite
B-GEM-011-HO
\$16 W | \$40 R



Black Onyx
B-GEM-011-BO
\$16 W | \$40 R



Rings

Size 6, 7, 8
\$56 W | \$140 R



Moonstone
R-GEM-009-WM-G

Black Spinel
R-GEM-009-BSN-G



Labradorite
R-GEM-009-LB-G



Amazonite
R-GEM-009-AM-G



Deanna Rings Size 6, 7, 8



Opal
R-OPL-001
\$26 W | \$65 R



Quartz
R-GEM-008-QZ
\$44 W | \$110 R



Labradorite
R-GEM-008-L-G
\$44 W | \$110 R



Moonstone
R-GEM-008-M-G
\$44 W | \$110 R



Tanzanite
R-GEM-007-TZ
\$60 W | \$150 R



Jewelry Boxes



Inscribed on inner lid:

“Every piece helps student survivors of power-inequality trauma achieve their education.”



Small
BOX1
\$1.75



Medium
BOX2
\$2



Large
BOX3
\$2.50



KAMARIA

175 Varick Street

Floor 1

New York, NY 10014

contact@kamaria.com

202-656-2564

kamaria.com

restoredignity.com

Insta: [@kamariajewelry](https://www.instagram.com/kamariajewelry)

Insta: [@restoredignity](https://www.instagram.com/restoredignity)

